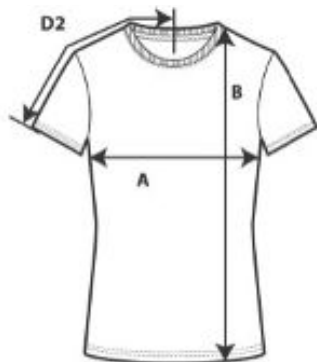




DETAILS	
Weight	153.0 G/SqM (White 144.0 G/SqM)
Content	100% Ring Spun Cotton
Yarn Count	31/1
Features	Fitted silhouette with side seam High stitch density for smoother printing surface Seamless Twin needle 1.3 cms. collar Taped neck and shoulders Tear away label and double-satin label Twin needle sleeve and bottom hems
Sizes	S-2XL
Case Packs	S - 2XL 72 PIECES
Colours	28
SKU's	140

NECK LABEL						
<b>GILDAN®</b>						
<b>SOFTSTYLE</b>						
Made in Honduras Fabriqué au Honduras Hecho en Honduras						
<table border="0"> <tr> <td><b>2XL</b></td> <td><b>2TG</b></td> <td><b>2EG</b></td> </tr> <tr> <td>LADIES</td> <td>DAMES</td> <td>DAMAS</td> </tr> </table>	<b>2XL</b>	<b>2TG</b>	<b>2EG</b>	LADIES	DAMES	DAMAS
<b>2XL</b>	<b>2TG</b>	<b>2EG</b>				
LADIES	DAMES	DAMAS				

Companion Styles  
Mens 64000 | Youths 64000B



SPECIFICATIONS							
Centimeters	Tol-	Tol+	S	M	L	XL	2XL
Chest (A)	2.540	2.540	40.640	43.180	46.990	49.530	55.880
Length from HPS (B)	2.540	2.540	64.135	66.675	69.215	71.120	72.390
Sleeve length (Centre back) (D2)	1.905	1.905	29.210	30.480	31.750	33.655	35.560
Inches	Tol-	Tol+	S	M	L	XL	2XL
Chest (A)	1.000	1.000	16.000	17.000	18.500	19.500	22.000
Length from HPS (B)	1.000	1.000	25.250	26.250	27.250	28.000	28.500
Sleeve length (Centre back) (D2)	0.750	0.750	11.500	12.000	12.500	13.250	14.000

### Colours available S-2XL

Antique Cherry Red	246	90% Cotton, 10% Polyester	Navy	032	
Antique Heliconia	247	90% Cotton, 10% Polyester	Purple	081	
Antique Sapphire	254	90% Cotton, 10% Polyester	Red	040	
Azalea	071		Ring Spun Sport Grey	295	90% Cotton, 10% Polyester
Black	036		Royal	051	
Charcoal	042		Sand	038	
Cherry Red	194		Sapphire	026	
Chestnut	084		White	030	
Cobalt	445				
Cornsilk	475				
Daisy	098				
Dark Heather	108	35% Cotton, 65% Polyester			
Heather Orange	259	35% Cotton, 65% Polyester			
Heather Purple	232	35% Cotton, 65% Polyester			
Heliconia	010				
Indigo Blue	080				
Irish Green	167				
Light Blue	069				
Light Pink	020				
Mint Green	455				