

NEW 2020

# ROYAL LINE

## B&C KING Crew Neck

WU01K



COLLECTION

The luxurious Crew Neck thanks to exceptional softness, modern style and supreme printability offering 20 awesome colours and a wide range of sizes. The premium Crew Neck at its best.

20 COLOURS

VISIBLELY MORE PRINTABLE  
ROYAL PST  
OUTER 100% COTTON



### SWEATSHIRT - BRUSHED

80% Pre-Shrunk Ring-Spun Combed Cotton - 20% Polyester

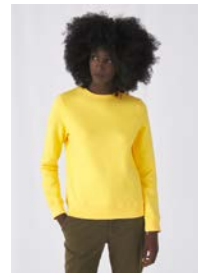
280 g/m<sup>2</sup> | XS - S - M - L - XL - 2XL - 3XL - 4XL\*

5 pcs/pack & 30 pcs/carton

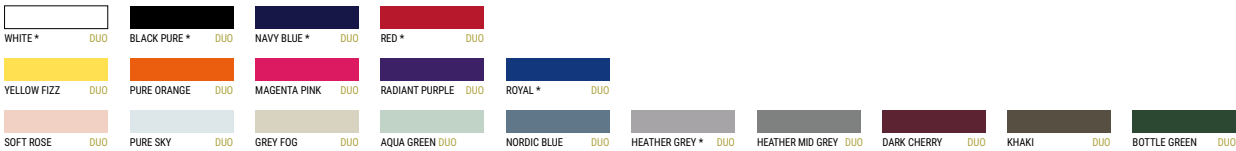
\* Only available in Black Pure, Navy Blue, Heather Grey, Asphalt, Royal, Red, White

SWEATSHIRTS | UNISEX

Want the same style but in women?  
Try the B&C QUEEN Crew Neck



DUO♂  
CONCEPT ♀



HEATHER GREY: 75% PRE-SHRUNK RING-SPUN COMBED COTTON - 21% POLYESTER - 4% VISCOSE / HEATHER MID GREY: 60% PRE-SHRUNK RING-SPUN COMBED COTTON - 40% POLYESTER

### Style

- Elegant, luxurious & comfortable Crew Neck sweatshirt
- Side seamed style ensures the best fit and a masculine silhouette
- Identical colours (20) for men and women for a perfect duo
- 8 sizes - XS to 4XL
- Qualitative long-lasting necktape
- Single Jersey halfmoon in the back for premium look and extra durability

### Quality / Handfeel

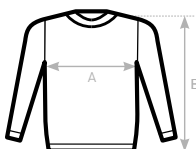
- Made of 80% ring-spun combed cotton / 20% Polyester
- STANDARD100 by OEKO-TEX® certification for the best comfort of your skin
- Ultrasoft peached feel 100% cotton-faced fabric with ultimate printing surface
- Brushed inside for a perfect warm and cosy premium feel
- Truly durable and ultra-comfortable thanks to B&C PST technology and its polyester filament

### Printability / Decoration

- Ultimate printing surface thanks to its ultrasoft 100% combed cotton-faced fabric (B&C PST technology)
- Very smooth, soft and even surface for perfect printing results
- Tested and approved for all printing techniques applicable on cotton
- Folded in box to ease the decoration process

### Labels

- Retail like labeling
- Ultrasoft double satin label
- Qualitative Gold and Black print design
- Straightforward size identification
- Labels are following the mandatory EU regulation



B&C KING CREW NECK WU01K	XS	S	M	L	XL	2XL	3XL	4XL
A HALF CHEST	49	52	55,5	59	62,5	66	70	74
B BODY LENGTH	69	71	73	75	77	79	80	81



Tested for harmful substances  
www.oeko-tex.com/standard100